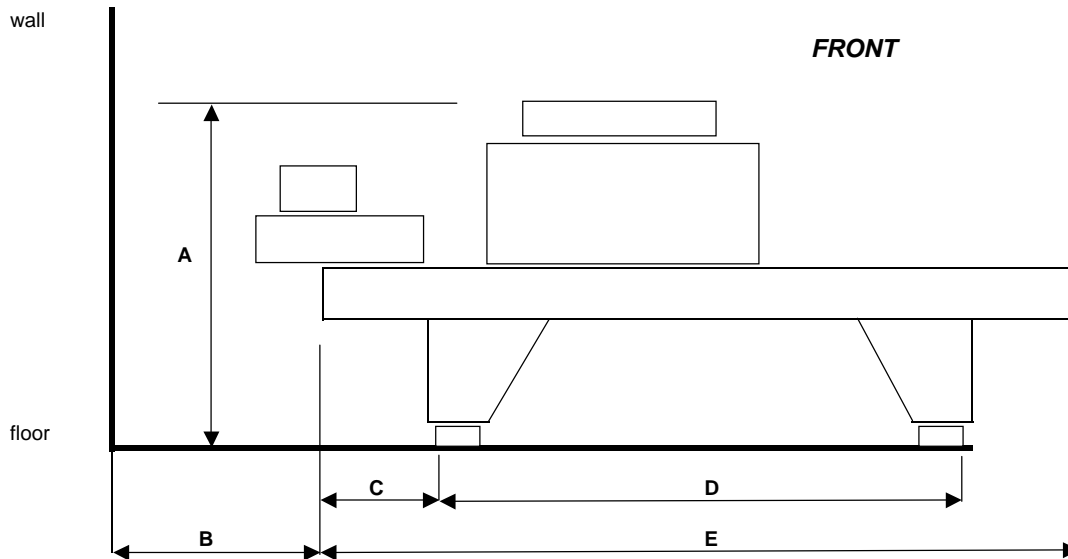
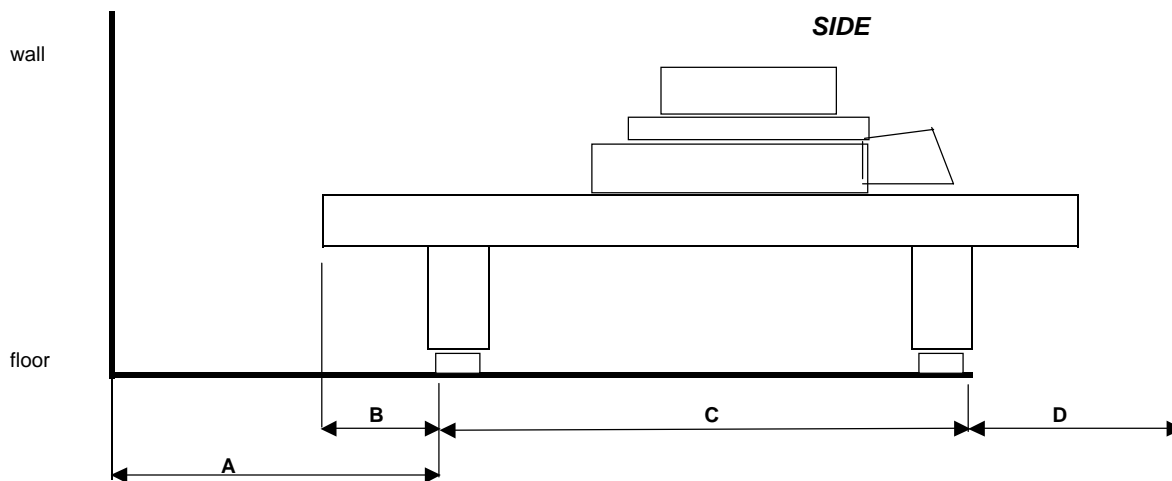


MISOMEX 600 Series: 601 / 602 / 603



All 601 602 603	A	62"- 75" (1570 - 1860 mm)*	B	45" min (1143 mm)	C	30" (770 mm)
			D	77" (1960 mm)	E	131" (3330 mm)
				85" (2160 mm)		139" (3530 mm)
				93" (2360 mm)		147" (3730 mm)

*** Note:** The height of the machine depends on a light unit.
THEIMER light unit is 13" higher then the OLEC light unit



All 601 602 603	A	35" min (900 mm min)	B	17" (435 mm)
	C	54" (1380 mm)	D	16" min (400 mm min)
	C	62" (1580 mm)	D	16" min (400 mm min)
	C	70" (1780 mm)	D	16" min (400 mm min)